



ATCS-60



100%

100

1

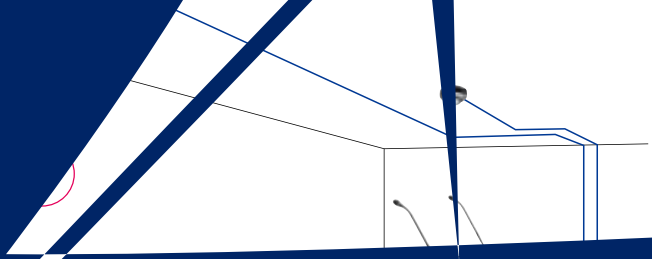
150

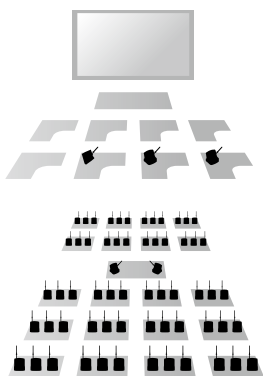
2

10 "ATCS-M55"

2

"ATCS-M60"





# ATCS-M60

▶ 4

NEW

+3

1



# ATCS-60

## ATCS-60 Series

ATCS-M60



## ATCS-50 Series

ATCS-M55



ATCS-M50



|                        |  |  |                      |  |  |                 |  |  |
|------------------------|--|--|----------------------|--|--|-----------------|--|--|
|                        |  |  | ATCS-M50             |  |  |                 |  |  |
| 1                      |  |  | 1                    |  |  | 5 x5 x2         |  |  |
|                        |  |  | —                    |  |  |                 |  |  |
| 4                      |  |  | —                    |  |  | 2               |  |  |
| 1 4                    |  |  | —                    |  |  | 1 2             |  |  |
| ATCS-C60               |  |  | —                    |  |  | —               |  |  |
| ATCS-C60               |  |  |                      |  |  |                 |  |  |
| 5                      |  |  | 4 1 3                |  |  | 4 1 3           |  |  |
| 4                      |  |  | 1                    |  |  | 1               |  |  |
| 10                     |  |  | 6                    |  |  | 6               |  |  |
| ID001                  |  |  | ID001                |  |  | ID001           |  |  |
| LED                    |  |  | LED                  |  |  | LED             |  |  |
| ALC                    |  |  |                      |  |  | —               |  |  |
| LI-240 2,400mAh        |  |  | UR-121 1,600mAh      |  |  | UR-121 1,600mAh |  |  |
| 6 10                   |  |  | 6 20                 |  |  | 6               |  |  |
| 5.5                    |  |  | 4                    |  |  |                 |  |  |
| ATCS-B60               |  |  | ATCS-B50<br>ATCS-B60 |  |  |                 |  |  |
| ATCS-A60 ATCS-D60 16   |  |  | ATCS-A50 5           |  |  |                 |  |  |
| 1                      |  |  | 2 Tx Rx)             |  |  |                 |  |  |
| ATCS-60MIC ATCS-L60MIC |  |  | ATCS-935/ML ATCS-49Q |  |  |                 |  |  |
| ATCS-C60               |  |  | ATCS-C50             |  |  |                 |  |  |
|                        |  |  |                      |  |  |                 |  |  |
| /                      |  |  | /                    |  |  |                 |  |  |
|                        |  |  | —                    |  |  |                 |  |  |
|                        |  |  |                      |  |  |                 |  |  |
|                        |  |  | —                    |  |  |                 |  |  |
|                        |  |  | —                    |  |  |                 |  |  |
|                        |  |  | —                    |  |  |                 |  |  |
|                        |  |  | —                    |  |  |                 |  |  |
| —                      |  |  | —                    |  |  |                 |  |  |
|                        |  |  |                      |  |  |                 |  |  |
| 5                      |  |  | —                    |  |  |                 |  |  |

# ATCS-M60 ATCS-60

NEW

## ATCS-M60

ATCS-60MIC

ATCS-L60MIC

ATCS-A60

ATCS-B60

ATCS-C60

ATCS-D60

ATCS-C60MAG

LI-240

AD-SZ1210CE /  
AD1210UKB (UK )

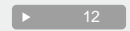


“ ” “ ”

TALK



ON/OFF



4

4

ATCS-60MIC  
ATCS-L60MIC



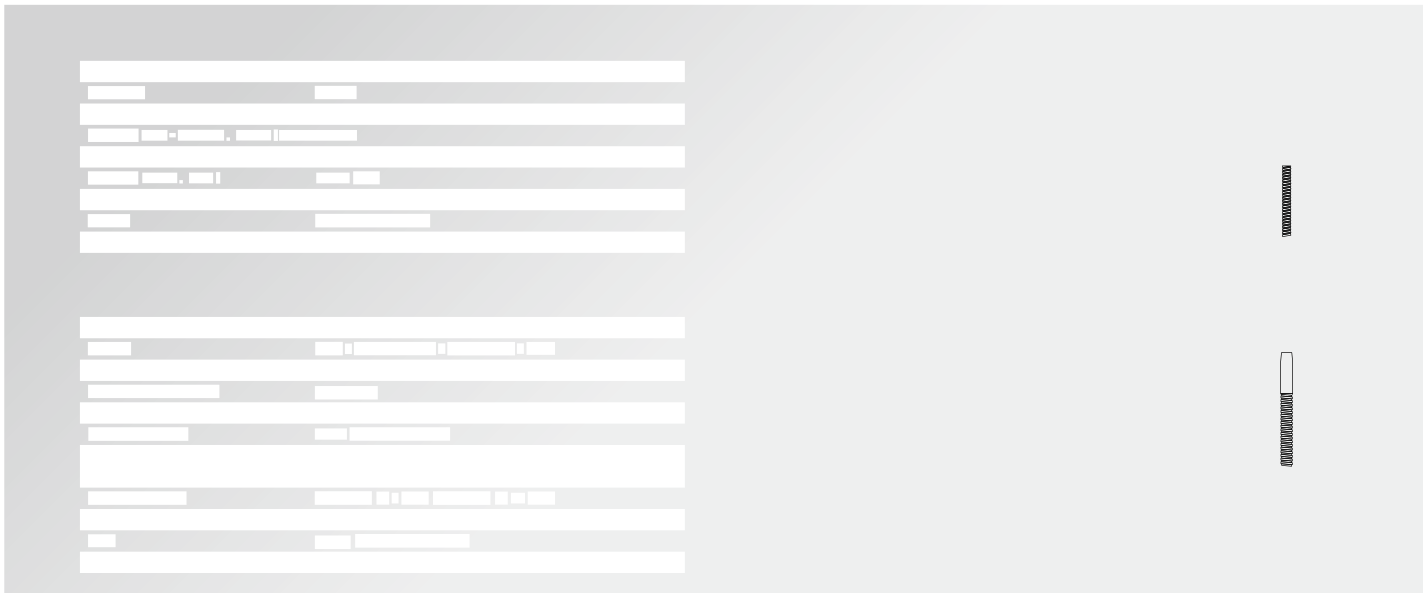
■  
"001" ID  
"002" ID

"001"

■  
ID001 TALK  
2

TALK



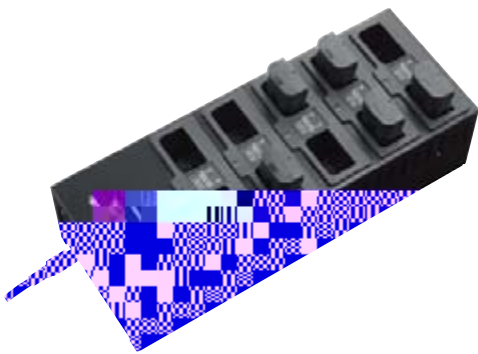
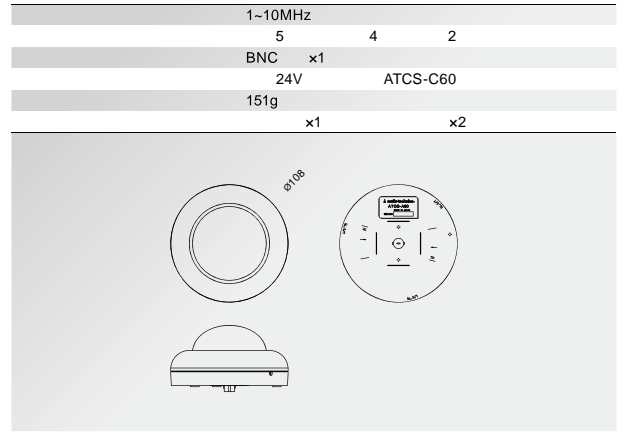






# ATCS-A60

BNC  
LED



AD-SZ1210CE

ATCS-M60



AD1210UKB

UK



LI-240

ATCS-M60

ATCS-M60



1

(ATCS-M60)

(ATCS-B60)

+ -

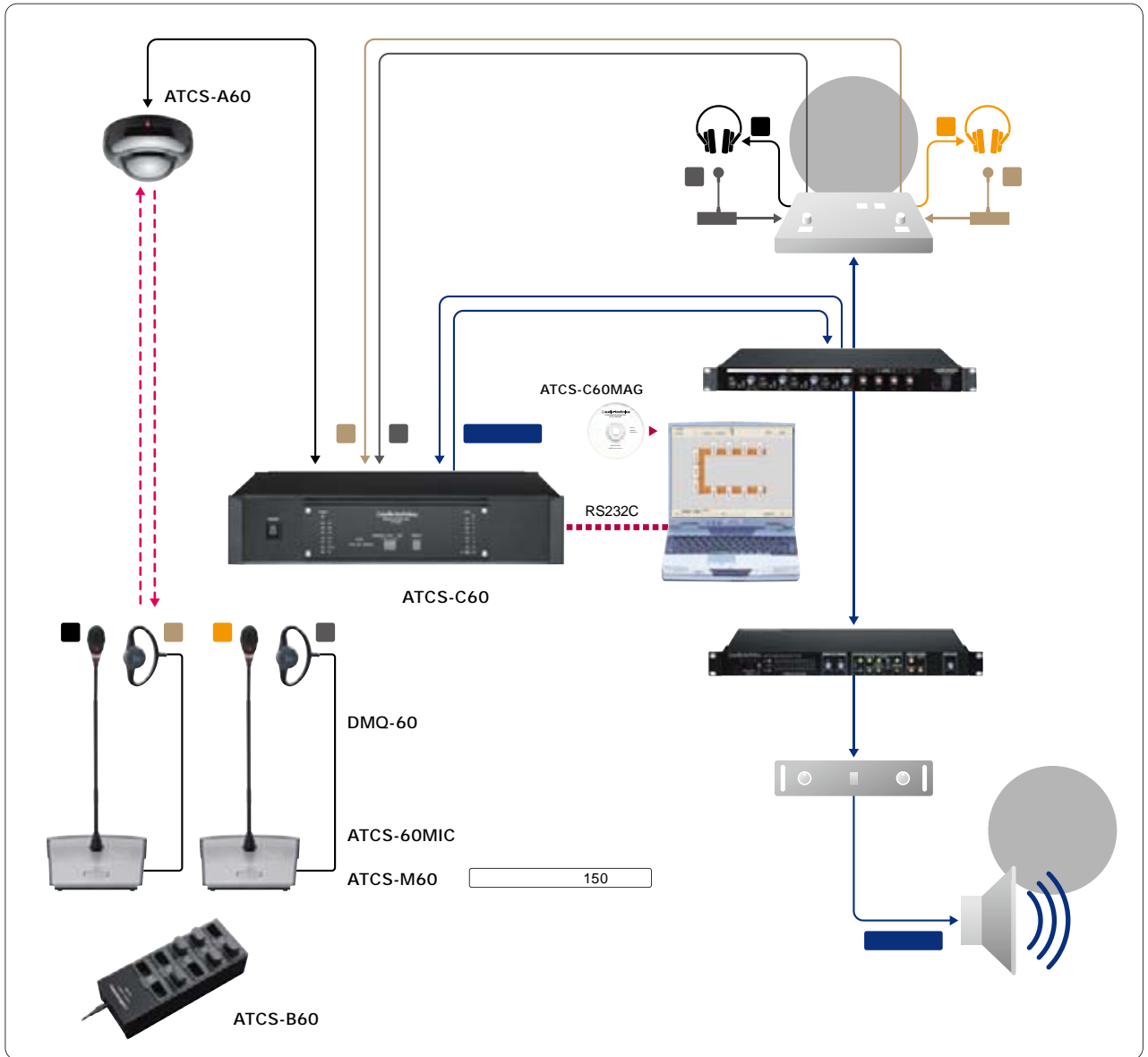
ATCS-C60MAG

12

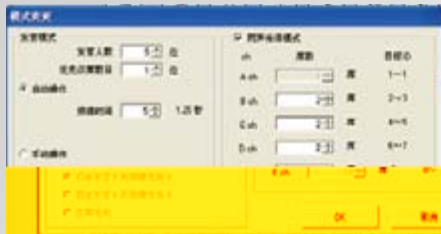


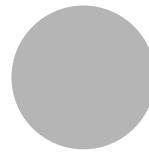
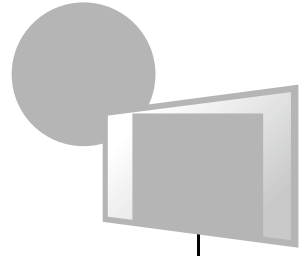
DMQ-60





### (ATCS-C60MAG)





(ATCS-C60MAG)



# OPTIONS Software

ATCS-60

ATCS-60  
**ATCS-C60MAG**



( / )

RS232C



\*

WMV

WMA  
Windows MediaPlayer

\*  
\*



*always listening*



Distributor

( )

|                                  |          |                      |
|----------------------------------|----------|----------------------|
| 51                               | 9 K      | +852 23569268        |
| 北京市朝阳区光华路 2号阳光100 国际公寓 D 座 602 室 |          | +86 (0)10 - 65868172 |
| 244 3 310                        |          | +86 (0)21 - 56962807 |
| 31                               | 908(904) | +86 (0)20 - 37619291 |
| 258                              | 27 D03   | +86 (0)27 - 85488466 |
| 2                                | 505-2    | +86 (0)28 - 86615097 |

<http://www.audio-technica.com.hk>



( )