

Vi1000™

96-CHANNEL COMPACT DIGITAL MIXING CONSOLE



96 I/O channels / 24 outputs
Plus LRC master busses

Universal audio
With Viconics II knobs-on-glass functionality and Faderglow

Smart DSP
With BSS DPR901ii DEQ, vMIX automixing & Lexicon multiFX

Instant Dante
Facilitates instant connection to industry standard Dante audio networks

Tethered management

OVERVIEW

Soundcraft Vi1000 is a compact digital mixing console with 96 channels and 24 outputs. It features a large color LCD display, a control surface with faders and knobs, and a rear panel with various I/O options. The console is designed for professional audio applications, including live performance, recording, and broadcast. It offers a wide range of processing options, including dynamic EQ, multi-effects, and automatic mixing. The Vi1000 also supports Dante audio networking, allowing for easy integration into a digital audio network. The console is a versatile and powerful tool for any audio professional.

KEY MESSAGES

PROCESSING

In addition to the standard gates and comps on all channel paths, audio processing includes the acclaimed BSS DPR901ii Dynamic EQ (8 instances) via an insertable processing pool which also includes 4 Lexicon Multi-effects and the ability to insert up to 64 external devices. STUDER vMIX automatic microphone mixing comes as standard and BSS 966 graphic EQs are available on all output busses.

COMPREHENSIVE I/O

The Vi1000 comes with rear panel local I/O featuring 16 mic/line inputs, 16 line outputs, and two 64ch expansion slots allowing up to two MADI-based stageboxes to be connected, or alternatively access to the extensive range of D21m I/O option cards, addressing all industry standard audio formats. A built-in 64x64ch Dante/MADI interface provides direct recording/playback connection to any PC or Mac-based recording software, and allows the Vi1000 to integrate into an existing Dante network. The optical MADI interface allows an alternate record feed to MADI-based storage devices or connection to the

Soundcraft Realtime Rack Plug-in engine, adding a suite of Universal Audio UAD-powered plug-ins to the Vi1000's pristine audio quality. 4 channels of AES/EBU I/O complete the back panel, bringing the total I/O count to 212 in, 212 out. The 128 tie lines facility allows any I/O connector to be split or linked to any other.

SOFTWARE FEATURES

New with Vi1000 is compatibility with Sennheiser 6000-series wireless microphone systems, adding to the existing AKG WMS/DMS and Shure ULXD/QLXD monitoring and control functionality. This powerful feature allows users to see status of battery, RF and other parameters of connected microphones directly on the channel strips—in combination with vMIX dialogue Automixing and BSS Dynamic EQ, this makes Vi1000 an ideal tool for conferencing and theatre work.

Another new feature allows input channels to be easily spread across all of the Vi1000's 8 input and 8 output faders, giving easier handling of complex mixes.

Vi1000™

Soundcraft®
by HARMAN

96-CHANNEL COMPACT DIGITAL MIXING CONSOLE

APPLICATIONS ■

RENTAL COMPANIES
TOURING
CORPORATE A/V
MUSIC VENUE INSTALLATION

PHYSICAL SPECIFICATIONS ■

WEIGHT:
Vi1000 console only: 25kg (55lbs)
Vi1000 console incl. standard shipping carton: 46kg (102lbs)
DIMENSIONS: 84mm (3.2") x 803mm (31.6") x 351mm (13.8")

TECHNICAL SPECS ■

CONTROL SURFACE

I M Fa :
8 (16 when assigned to output faders)
O M Fa :
8 + 3 + 1
T M Fa :
20
Vi M i II :
2 (1 input, 1 master)

LOCAL I/O PHYSICAL CONNECTORS

T M I/O M :
212 in/212 out
Mi /Li I M :
16 Soundcraft HQ preamps
Li O M M :
16
AES/EBU I (M SRC):
2 (4ch)
AES/EBU O M :
2 (4ch)

TB Mi i :
1 front panel with rear panel 48V on/off sw
P M :
1 stereo jack, under front armrest
Da M M :
1x 64ch
MADI O M a :
64 in/64 out
D21 O M S M :
2x double/4 single (total 128ch)

DSP MIXING CORE

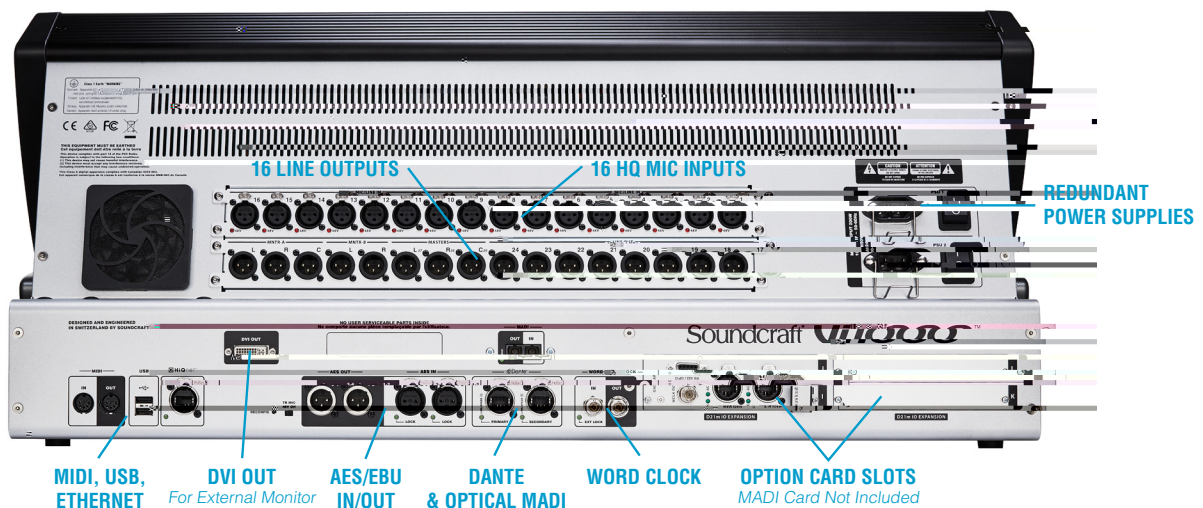
I M C a :
96 mono Pairable to 48 stereo
B - A /G :
24 mono or stereo
B - Ma M i :
From bus pool – max 16 mono/stereo
B - Ma M i :
3 (LRC)

A i a I M P i M :

64 external + 8 DEQ + 4FX
L i FX:
4 Stereo reverb/delay/pitch effects
BSS GEQ:
All mono/stereo busses and masters
BSS DPR901 II DEQ:
8 instances
MIX A M i i :
2x16ch instances

EXTERNAL CONTROL PORTS

EM M :
1 (for Mirroring and external control)
MIDI:
1 In 2 Out
Ma i I M :
2, switched, for redundant PSUs.
USB2.0:
4 (2 front, 2 rear)
W :
In /Out 2x BNC

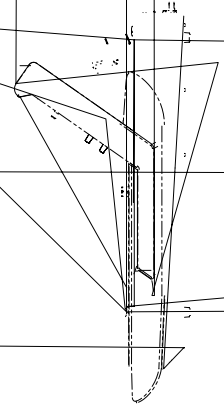


Vi1000™

Soundcraft®
by HARMAN

96-CHANNEL COMPACT DIGITAL MIXING CONSOLE

PHYSICAL DIMENSIONS ■



© 2017 HARMAN International Industries, Incorporated. All rights reserved. Features, specifications and appearance are subject to change without notice.

www.soundcraft.com

SPEC SHEET